



Castles

OFFERS IN EXCESS OF

£525,000

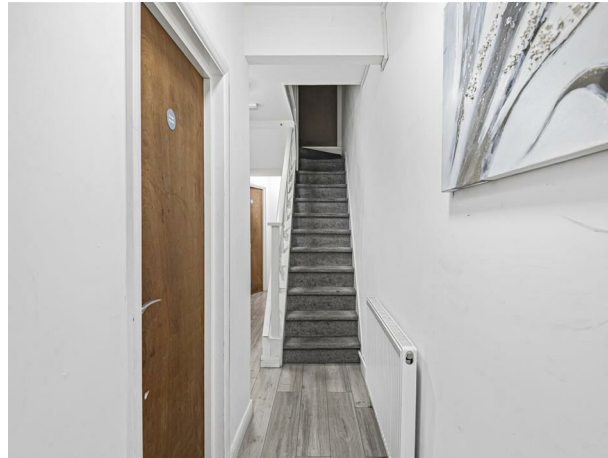
Grosvenor Road

London, N9 8RG

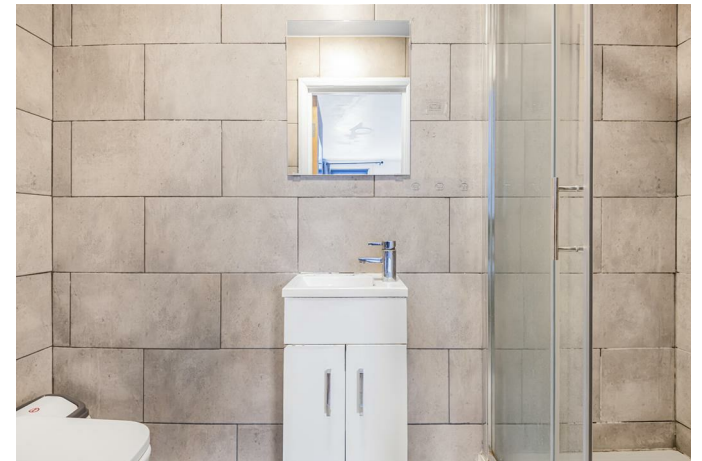


## PROPERTY SUMMARY

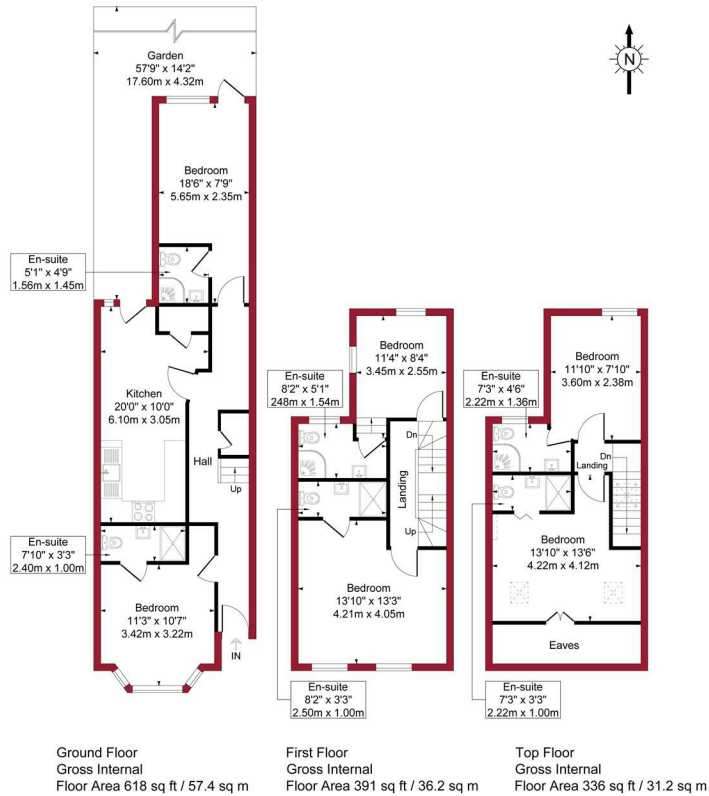
A Four/Five bedroom extended Victorian Terraced property situated within 1/2 mile of Edmonton Green with it's shops and transport links. The property is currently set up as an HMO and easily converted back to a residential property. The property is set up over three floors and has features to include, gas central heating, double glazing and can be offered on a chain free basis.



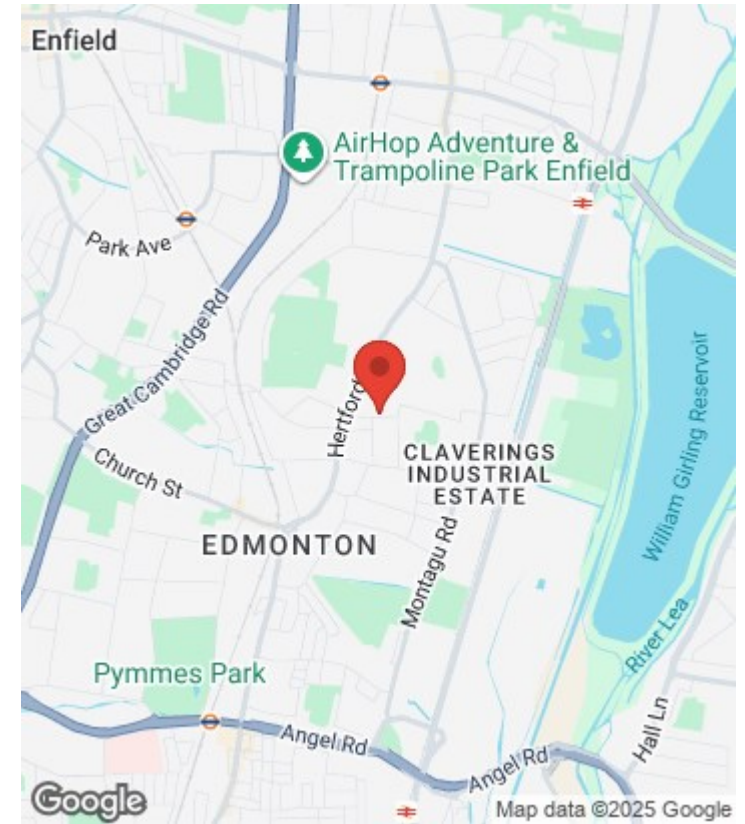
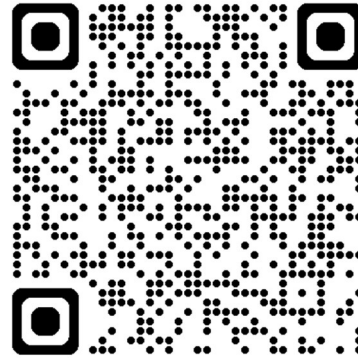




Grosvenor Road, London, N9 Approximate Gross Internal Area = 1345 sq ft / 124.8 sq m



For a guide to the area please scan this code for more information



House - Terraced

Freehold

**Council:**

**Council Tax Band: D**

Agents Note: Whilst every care has been taken to prepare these particulars, they are for guidance purposes only. All measurements are approximate and are for general guidance purposes only and whilst every care has been taken to ensure their accuracy, they should not be relied upon and potential buyers/tenants are advised to recheck the measurements



#### OFFICE ADDRESS

438 Hertford Road  
Edmonton  
London  
N9 8AB

#### OFFICE DETAILS

020 8804 8123  
edmonton@castles.london  
<https://www.castles.london/>

